



The mulcher Cabezal MF-3 is a standard flow mulching attachment suitable to compact track loader having a weight between 3 and 7 t.

Suitable for the maintenance of greenspaces, forest maintenance, industrial gardening and bushes up to 10 cm for a rotor with swinging hammers, and up to 350 mm of diameter with a rotor with fixed tooth carbide.

CHARACTERISTICS

- ▶ Non-wear steel-plate chassis, thickness 8 mm.
- ▶ Rotor POLSER + of Ø 470 mm.
- ▶ Mulcher for head compact track loader having a weight between 3 and 7 t.
- ▶ 3 XPC side belt transmission.
- ▶ Safety chains.
- ▶ High speed and high strength bearings.
- ▶ Hydraulic engine with pistons.
- ▶ Front skid shoes.
- ▶ Swinging small forged forestry hammers 360° or fixed tooth with tip in tungsten or blades DRR.
- ▶ Compact drive cover.
- ▶ Valve of recirculation incorporated into the motor.
- ▶ Rear hydraulic hood.
- ▶ Model built under EC Normative.
- ▶ Safety indicators visible to personnel.

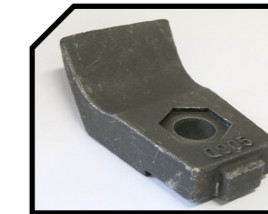


Valve of recirculation incorporated into the motor



Swinging hammers

DRR



Hydraulic rear hood

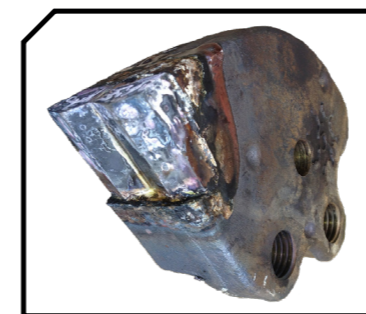


Fixed tooth

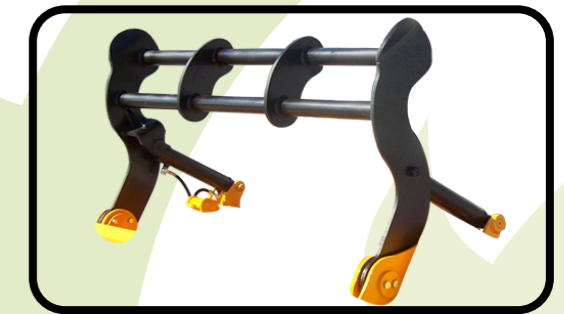


| MODEL | mm | HORSE POWER | | mm | mm | mm | KG | N° BELTS TYPE | Diagram | | | | | | mm |
|--------|------|--------------|-----------|----|----|----|------|---------------|---------|------|------|------|------|------|------|
| | | min. req. | max. aut. | | | | | | A mm | A in | B mm | B in | C mm | C in | |
| T-1400 | 1400 | 90-100 l/min | 300 bar | 12 | 36 | 18 | 793 | 3 XPC | 1635 | 64" | 995 | 39" | 812 | 32" | 2200 |
| T-1600 | 1600 | 90-100 l/min | 300 bar | 16 | 44 | 22 | 897 | 3 XPC | 1835 | 72" | 995 | 39" | 812 | 32" | 2200 |
| T-1800 | 1800 | 90-100 l/min | 300 bar | 16 | 50 | 24 | 957 | 3 XPC | 2035 | 80" | 995 | 39" | 812 | 32" | 2200 |
| T-2000 | 2000 | 90-100 l/min | 300 bar | 20 | 50 | 26 | 1015 | 3 XPC | 2235 | 88" | 995 | 39" | 812 | 32" | 2200 |

FIXE TOP System



OPTIONS



▶ Pushing frame

