



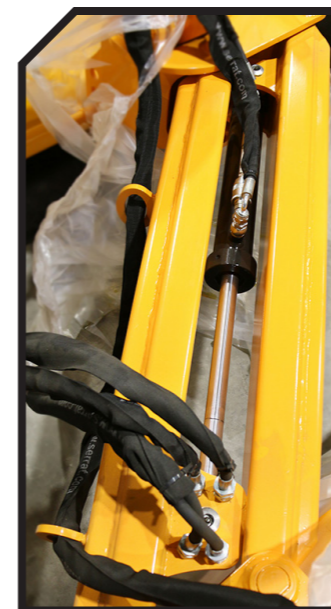
Offset Mulcher of high range, polyvalent, for works in agricultural margins, banks, highways, channels, roads and others clears of public works for tractor between 70 - 120 HP. It incorporates safety system thanks to a valve positioned in the cylinder of elevation of the arm. It has a rear hood with two positions. Angulation +90° / -65°. Rotor POLSER of 450 mm of diameter with hammer of high edge.

CHARACTERISTICS

- ▶ Non-wear steel-plate chassis, thickness 8 mm.
 - ▶ Rotor POLSER of Ø 450 mm.
 - ▶ Gearbox SERRAT until 120 HP.
 - ▶ 3 XPC side belt transmission.
 - ▶ GIROSTOP System.
 - ▶ Hammers guaranteed against breakage.
 - ▶ Height-adjustable rear roller Ø 180 mm.
 - ▶ PTO 750 rpm.
 - ▶ High speed and high strength bearings.
 - ▶ Front protection curtain.
 - ▶ Front skid shoes.
 - ▶ Double bearing on rear roller.
 - ▶ Angulation +90°/-50°.
 - ▶ Hydraulic lateral offset mulcher.
- ▶ Supports of bearing rotor in steel.
 - ▶ Rear mechanical hood (2 positions).
 - ▶ 3 point hitch - cat. 2 and 3.
 - ▶ Safety valve.
 - ▶ Model built under EC Normative.
 - ▶ Safety indicators visible to personnel.



Hydraulic displacement



System antiwire in rotor



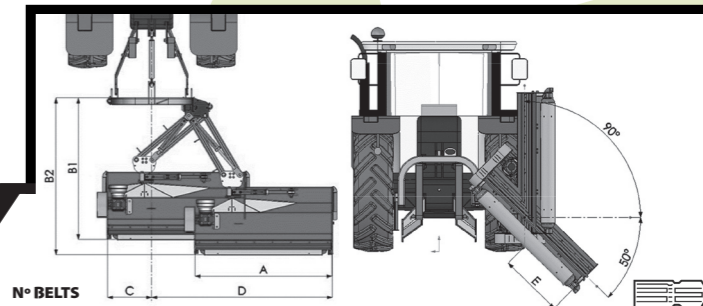
Angulation:
+90°





-65°

OPTIONS



▶ Homokinetic knot



MODEL	mm	KW-HP					N° BELTS TYPE	A	B1	B2	C	D	
								mm-in	mm-in	mm-in	mm-in	mm-in	
T-1600	1600	51 - 70 88 - 120	12	24	810	3 XPC	1600 - 63"	1975 - 78"	2290 - 90"	820 - 32"	2080 - 82"	750	
T-1800	1800	59 - 80 88 - 120	16	28	855	3 XPC	1800 - 71"	1975 - 78"	2290 - 90"	820 - 32"	2080 - 82"	750	
T-2000	2000	59 - 80 88 - 120	16	32	890	3 XPC	2000 - 79"	1975 - 78"	2290 - 90"	820 - 32"	2080 - 82"	750	
T-2300	2300	66 - 90 88 - 120	20	40	950	3 XPC	2300 - 91"	1975 - 78"	2290 - 90"	820 - 32"	2080 - 82"	750	

