



Soil preparation machine up to a depth of 30 cm, for tractors between 130 - 150 HP. Transforms forest land, with stumps and rocks, in land for cultivation avoiding accidents in later processes.

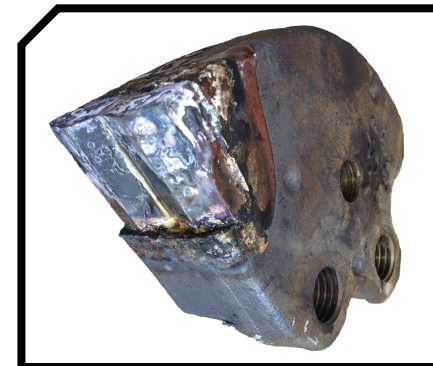
CHARACTERISTICS

- ▶ Steel-plate chassis, thickness 8 mm.
- ▶ Rotor FIXE TOP of Ø 470 mm.
- ▶ Gearbox with freewheel included.
- ▶ Double synchronous belt transmission.
- ▶ Supports of bearing rotor in steel.
- ▶ Oscillating bearings of double row of rollers.
- ▶ Double ploughshare for opening the land.
- ▶ PTO 1.000 rpm.
- ▶ Front skid shoes.
- ▶ Rear hydraulic hood.
- ▶ Chassis internal reinforcements.
- ▶ System antiwire in rotor.
- ▶ Compact drive cover.
- ▶ Transmission by cardan to side belts.
- ▶ Centralized greasing.
- ▶ Model built under EC Normative.
- ▶ Safety indicators visible to personnel.



Rear hidraulic hood
Compact drive cover

FIXE TOP System



Transmission by cardan to side belts

Centralized greasing



MODEL	mm	KW-HP	KG	Nº BELTS TYPE	Dimensions							
					A mm	A in	B mm	B in	C mm	C in		
T-1800	1800	97 - 130 112 - 150	44	1500	2 Synchronous	1800	71"	1500	59"	1400	55"	1000
T-2000	2000	101 - 135 112 - 150	50	1700	2 Synchronous	2000	79"	1500	59"	1400	55"	1000
T-2300	2300	105 - 140 112 - 150	58	2000	2 Synchronous	2300	91"	1500	59"	1400	55"	1000

