



FIXE TOP



Soil preparation machine up to a depth of 50 cm, for tractors between 250 - 500 HP. Transforms forest land, with stumps and rocks, in land for cultivation avoiding accidents in later processes.

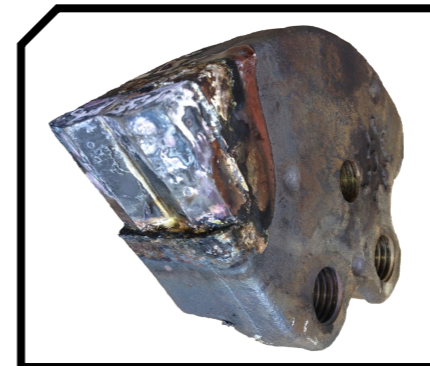
CHARACTERISTICS

- ▶ Steel-plate chassis, thickness 12 mm.
- ▶ Rotor FIXE TOP of Ø 625 mm.
- ▶ Gearbox with freewheel included.
- ▶ Double synchronous belt transmission.
- ▶ Supports of bearing rotor in steel.
- ▶ Oscillating bearings of double row of rollers.
- ▶ Double ploughshare for opening the land.
- ▶ PTO 1.000 rpm.
- ▶ Front skid shoes.
- ▶ Rear hydraulic hood.
- ▶ Chassis internal reinforcements.
- ▶ System antiwire in rotor.
- ▶ Compact drive cover.
- ▶ Transmission by cardan to side belts.
- ▶ Centralized greasing.
- ▶ Model built under EC Normative.
- ▶ Safety indicators visible to personnel.



Rear hidraulic hood
Compact drive cover

FIXE TOP System



Transmission by cardan to side belts

Centralized greasing



MODEL	mm	KW-HP		KG	N° BELTS TYPE							
						A mm	A in	B mm	B in	C mm	C in	
T-2000	2000	149 - 200 186 - 250	42	3091	2 Synchronous	2000	79"	1730	68"	1585	62"	1000
T-2500	2500	186 - 250 224 - 300	50	3466	2 Synchronous	2500	98"	1730	68"	1585	62"	1000
T-2700	2700	201 - 270 298 - 500	58	3634	2 Synchronous	2700	106"	1730	68"	1585	62"	1000
T-3000	3000	224 - 300 298 - 500	62	3841	2 Synchronous	3000	118"	1730	68"	1585	62"	1000

