



Heavy duty forestry mulcher for tractors between 150 and 230 HP. Equipped with swinging hammers for the cleaning of brushwood, which favors the growth of trees, the reclamation of land, the maintenance and restoration of banks, the maintenance of areas under power lines, forestry roads, fire blocking lines. Equipped with rotor of fixed tooth with system FIXE TOP, for thick wood and stumps. This mulcher integrates all the necessary options for an optimal forest work.

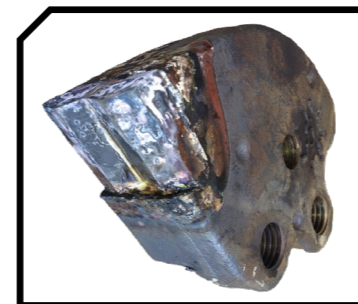
CHARACTERISTICS

- ▶ Steel-plate chassis, thickness 10 mm.
- ▶ Rotor POLSER + of Ø 625 mm.
- ▶ Gearbox with RAIL BOX System (optional) with freewheel included.
- ▶ 2 x 4 XPC side belt transmission.
- ▶ Swinging 360° forged forestry hammers SERRAT or fixed tooth with tip in tungsten or blades DRR.
- ▶ Supports of bearing rotor in steel.
- ▶ Oscillating bearings of double row of rollers.
- ▶ Double front safety chains.
- ▶ PTO 1.000 rpm.
- ▶ Steel counter hammers.
- ▶ Front skid shoes.
- ▶ Rear hydraulic hood.
- ▶ Chassis internal reinforcements.
- ▶ System antiwire in rotor.
- ▶ Compact drive cover.
- ▶ Hydraulic pushing frame.
- ▶ Transmission by cardan to side belts.
- ▶ Pulleys of diameter 290 mm.
- ▶ Model built under EC Normative.
- ▶ Safety indicators visible to personnel.



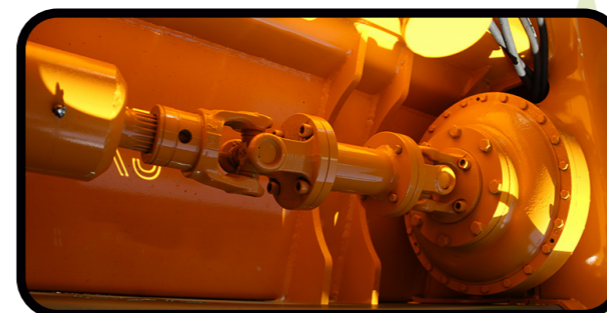
Pushing frame
Hydraulic rear hood
System antiwire in rotor

FIXE TOP System

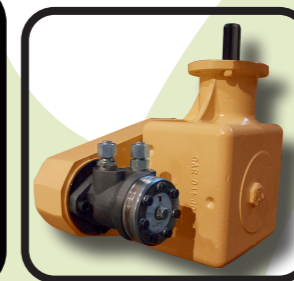


MODEL	mm	KW-HP	[Icon]	[Icon]	[Icon]	[Icon]	[Icon]	N° BELTS TYPE	[Diagram]					
									A mm	A in	B mm	B in	C mm	C in
T-2000	2000	112 - 150 208 - 280	20	48	26	2644	2 x 4 XPC	2384	94"	1550	61"	1680	66"	1000
T-2300	2300	119 - 160 208 - 280	20	56	28	2859	2 x 4 XPC	2690	106"	1550	61"	1680	66"	1000
T-2500	2500	134 - 180 208 - 280	25	62	30	3115	2 x 4 XPC	2884	113"	1550	61"	1680	66"	1000

OPTIONS



▶ Torque converter



▶ Hidrahelp



▶ Centralized greasing

