



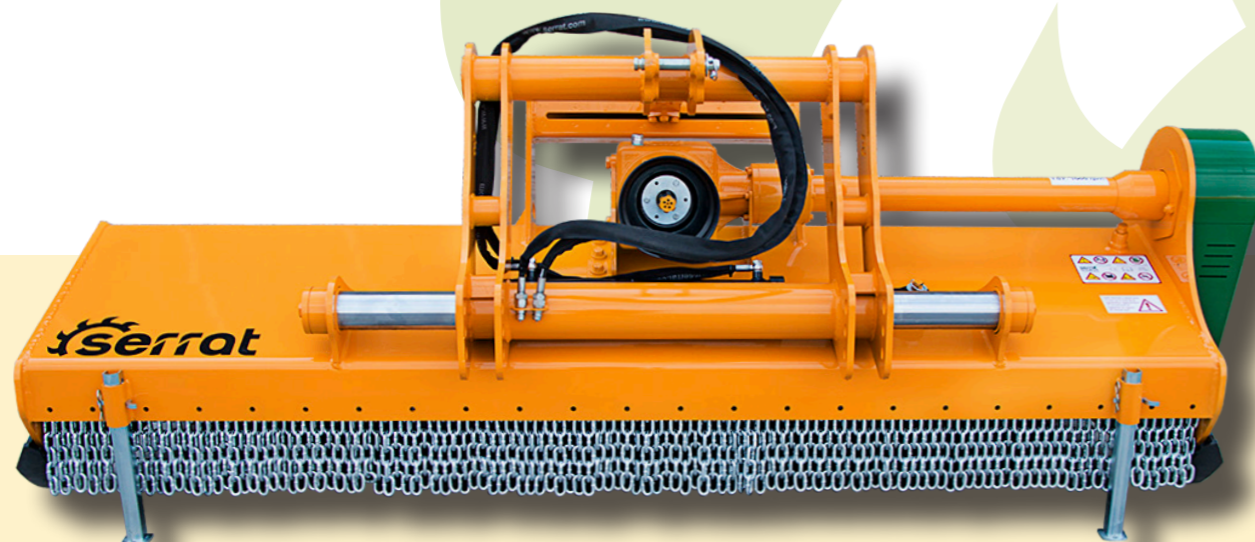
Mulcher for extensive agriculture (maize, sorghum, sunflower, cotton and all kinds of plant residue). It incorporates rotor POLSER which, thanks to its diameter, is capable of generating a great aspiration and raising the material from the furrow.

Ideal for the regeneration of meadows and grasslands.

Its movable configuration displaces laterally 600 mm of the axis of work by a hydraulic cylinder.

## CHARACTERISTICS

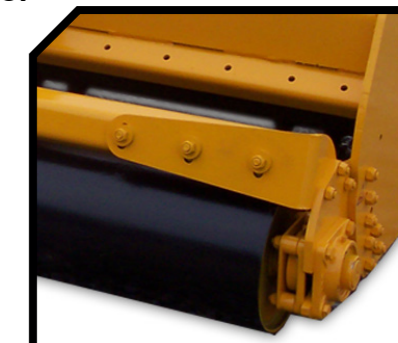
- ▶ Steel-plate chassis, thickness 10 mm.
- ▶ Rotor POLSER of Ø 550 mm.
- ▶ Gearbox SERRAT.
- ▶ 4 XPC side belt transmission.
- ▶ Stamped hammers or Y blades.
- ▶ Hammers guaranteed against breakage.
- ▶ GIROSTOP System.
- ▶ Supports of bearing rotor in steel.
- ▶ High speed and high strength bearings.
- ▶ Front protection curtain.
- ▶ Obturations antiwire in rotor.
- ▶ Double bearing on rear roller.
- ▶ Rear height-adjustable roller.
- ▶ PTO 1.000 rpm.
- ▶ 3 lines of counter hammers.
- ▶ Model built under EC Normative.
- ▶ Safety indicators visible to personnel.



## System antiwire in rotor



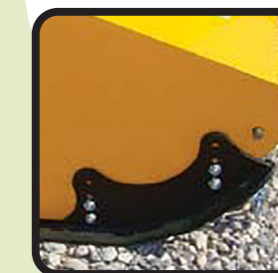
## Rear roller



MODEL	mm	KW-HP	kg	Nº BELTS TYPE	Diagram							
					A mm	A in	B mm	B in	C mm	C in		
T-2000	2000	74 - 100 110 - 150	16	1360	4 XPC	2237	88"	1434	56"	1235	48"	540
T-2300	2300	74 - 100 110 - 150	20	1490	4 XPC	2537	100"	1434	56"	1235	48"	540
T-2500	2500	74 - 100 110 - 150	20	1528	4 XPC	2737	108"	1434	56"	1235	48"	540
T-2800	2800	81 - 110 110 - 150	28	1640	4 XPC	3037	120"	1470	58"	1242	49"	1000
T-3000	3000	81 - 110 110 - 150	28	1600	4 XPC	3237	127"	1470	58"	1242	49"	1000
T-3200	3200	81 - 110 110 - 150	32	1700	4 XPC	3437	135"	1470	58"	1242	49"	1000

## OPTIONS

- ▶ Front gums
- ▶ Rear retainer



## ▶ Freewheel on sleeve



## ▶ Front skid shoes



## ▶ Front chains



## ▶ Rear gums



## ▶ Hydraulic rear roller



Carretera nacional 240 km. 149,3  
22310 Castejón del Puente (Huesca)-España  
Tfno. (+34) 974 417 830  
www.serrat.com - comercial@serrat.es



The data presented in this catalog are provided for information purposes only and are not binding.