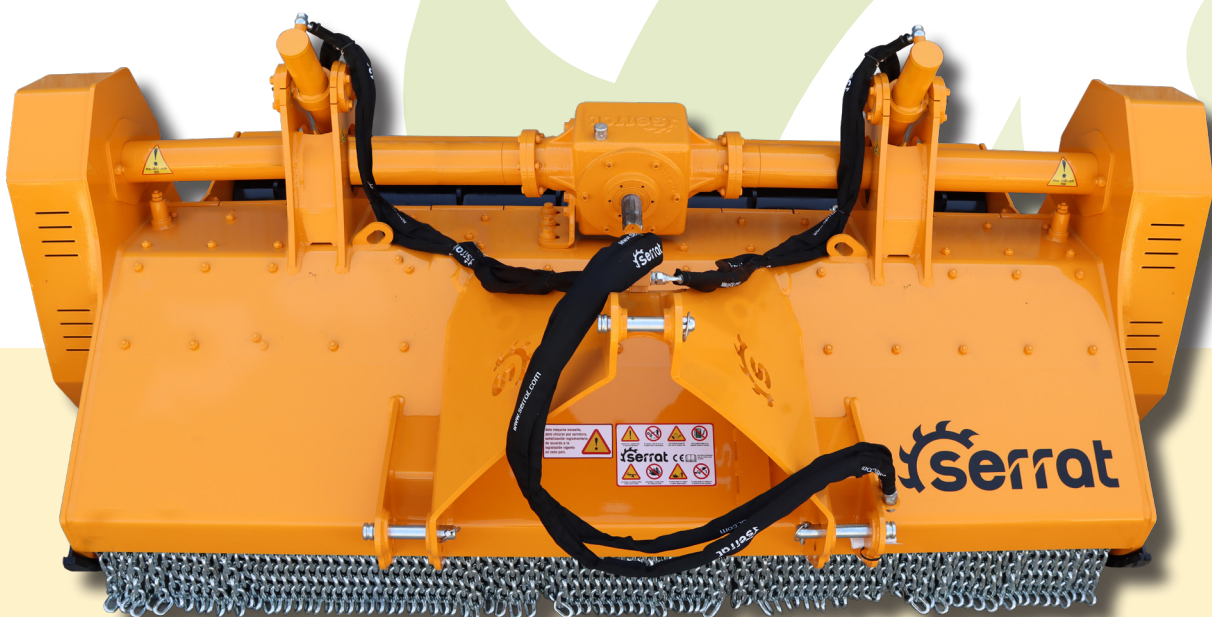


Soil preparation machine up to a depth of 200 mm, for tractors between 150 - 220 HP. Transforms forest land, with stumps and rocks, in land for cultivation avoiding accidents in later processes.

CHARACTERISTICS

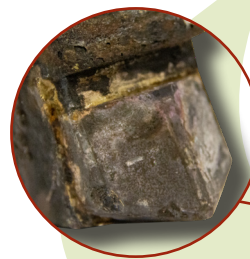
- ▶ Steel-plate chassis, thickness 10 mm.
- ▶ Rotor FIXE TOP of Ø 550 mm.
- ▶ Centralising greasing system
- ▶ Gearbox SERRAT for 220 HP.
- ▶ 2 x 4 XPC belt transmission.
- ▶ Supports of bearing rotor in steel.
- ▶ Oscillating bearings of double row of rollers.
- ▶ PTO 1.000 rpm.
- ▶ Rear hydraulic hood.
- ▶ Chassis internal reinforcements.
- ▶ System antiwire in rotor.
- ▶ Compact drive cover.
- ▶ Hydraulic levelling roller.
- ▶ Model built under EC Normative.
- ▶ Safety indicators visible to personnel.



Rear hydraulic hood
Compact drive cover



FIXE TOP System



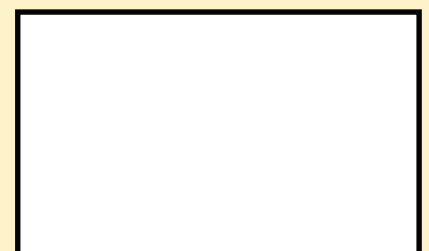
Soil

*For working in depth it is recommended that the tractor has a Creeper or Vario

MODEL					Nº BELTS TYPE							
	mm	KW-HP		KG		A mm	A in	B mm	B in	C mm	C in	
T-2000	2000	104 - 150 164 - 220	50	1990	2x4 XPC	2345	92"	1840	72"	1380	54"	1000
T-2300	2300	104 - 150 164 - 220	58	2200	2x4 XPC	2645	104"	1840	72"	1380	54"	1000
T-2500	2500	104 - 150 164 - 220	62	2290	2x4 XPC	2845	112"	1840	72"	1380	54"	1000



Carretera nacional 240 km. 149,3
22310 Castejón del Puente (Huesca) – España
Tfno. (+34) 974 417 830
www.serrat.com – comercial@serrat.es



The data presented in this catalog are provided for information purposes only and are not binding.