



Heavy duty forestry mulcher for tractors between 80 and 150 HP. Suitable for the cleaning of brushwood, which favors the growth of trees, the reclamation of land, the maintenance and restoration of banks, the maintenance of areas under power lines, forestry roads, fire blocking lines, etc.  
 Rotor of forest conception with swinging hammers of trapezoidal shape or fixed tooth carbide. The gearbox is put off with regard to the rotor to reduce the angulation of the transmission. It incorporates rotor POLSER + of 550 mm of diameter. Hooking: fixed and movable.

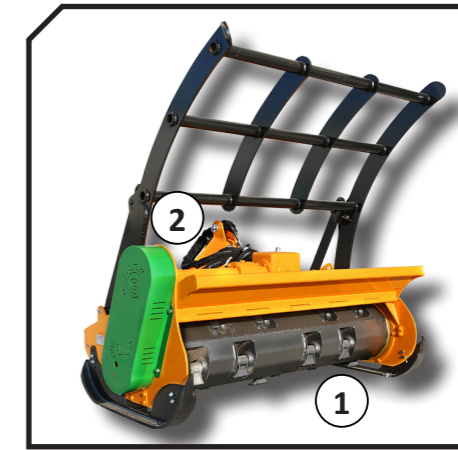
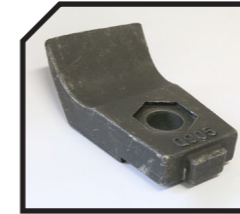
## CHARACTERISTICS

- ▶ Steel-plate chassis, thickness 10 mm.
- ▶ Rotor POLSER + of Ø 550 mm.
- ▶ Gearbox SERRAT for 150 HP.
- ▶ 3/4 XPC side belt transmission.
- ▶ Swinging 360° forged forestry hammers SERRAT or fixed tooth with tip in tungsten or blades DRR.
- ▶ Supports of bearing rotor in steel.
- ▶ Oscillating bearings of double row of rollers.
- ▶ Front protection curtain.
- ▶ PTO 540 rpm (1,000 rpm from T-1800).
- ▶ System antiwire in rotor.
- ▶ Steel counter hammers.
- ▶ Front skid shoes.
- ▶ Third hydraulic point.
- ▶ Model built under EC Normative.
- ▶ Safety indicators visible to personnel.

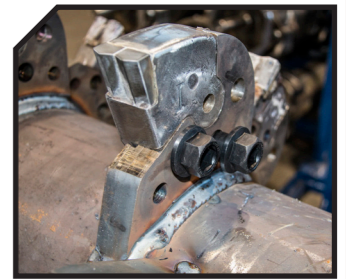


1. Swinging hammers
2. Third hydraulic point

Blades DRR



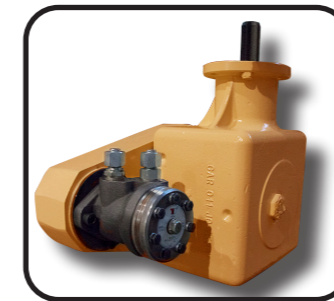
FIXE TOP System



MODEL	mm	KW-HP	12	36	18	1040	Nº BELTS TYPE	Dimensions						
								A mm	A in	B mm	B in	C mm	C in	
T-1400	1400	60 - 80 112 - 150	12	36	18	1040	3 XPC	1680	66"	1340	53"	1010	40"	540
T-1600	1600	65 - 88 112 - 150	12	40	22	1160	3 XPC	1880	74"	1340	53"	1010	40"	540
T-1800	1800	74 - 100 112 - 150	16	45	22	1253	4 XPC	2080	82"	1340	53"	1010	40"	1000
T-2000	2000	82 - 110 112 - 150	16	50	24	1325	4 XPC	2280	90"	1340	53"	1010	40"	1000
T-2300	2300	96 - 130 112 - 150	20	58	28	1510	4 XPC	2580	102"	1340	53"	1010	40"	1000

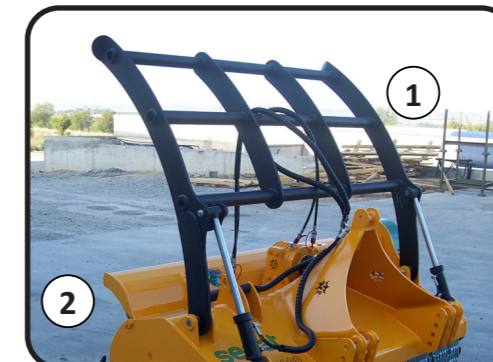
## OPTIONS

▶ Freewheel



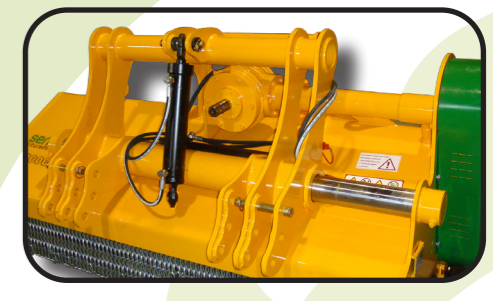
▶ Hidrahelp

▶ Compact drive cover



1. ▶ Pushing frame
2. ▶ Rear hydraulic hood

▶ Preparation for front lift (gearbox)



▶ Hydraulic side shift

