



Heavy duty forestry mulcher for tractors between 300 and 600 HP. Equipped with swinging hammers for the cleaning of brushwood, which favors the growth of trees, the reclamation of land, the maintenance and restoration of banks, the maintenance of areas under power lines, forestry roads, fire blocking lines. Equipped with rotor of fixed tooth with system FIXE TOP, for thick wood and stumps. This mulcher integrates all the necessary options for an optimal forest work.

CHARACTERISTICS

- ▶ Steel-plate chassis, thickness 15 mm.
- ▶ Rotor POLSER + of Ø 1,100 mm.
- ▶ Gearbox with freewheel included.
- ▶ Synchronous belts transmission.
- ▶ Fixed tooth with tip in tungsten or blades DRR.
- ▶ Gearbox with Synkrodos-600.
- ▶ Supports of bearing rotor in steel.
- ▶ Oscillating bearings of double row of rollers.
- ▶ Triple front safety chains.
- ▶ PTO 1,000 rpm.
- ▶ Steel counter hammers.
- ▶ Front skid shoes.
- ▶ Rear hydraulic hood with line of steel counter hammers.
- ▶ Hydraulic pushing frame.
- ▶ System antiwire in rotor.
- ▶ Compact drive cover.
- ▶ Chassis internal reinforcements.
- ▶ Transmission by cardan to side belts.
- ▶ Pulleys of diameter 450 mm.
- ▶ Model built under EC Normative.
- ▶ Safety indicators visible to personnel.



Rear hydraulic hood
RAIL BOX System (optional) with
freewheel included

Transmission by cardan to side belts
System antiwire in rotor

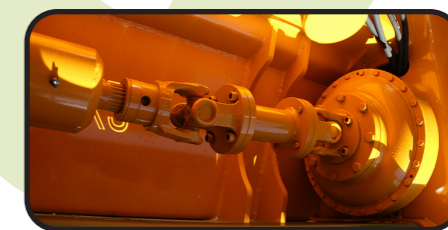


MODEL	mm	KW-HP			KG	Nº BELTS TYPE							
							A mm	A in	B mm	B in	C mm	C in	
T-2600	2600	223 - 300 447 - 600	128	64	7050	Synchronous	2705	107"	2270	89"	1700	67"	1000

OPTIONS



▶ Centralized greasing



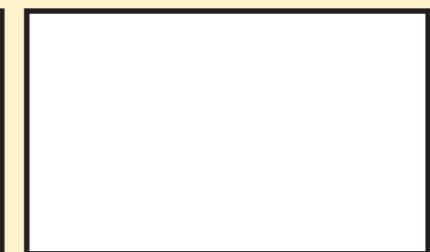
▶ Torque converter



▶ Hidrahelpe



Carretera nacional 240 km. 149,3
22310 Castejón del Puente (Huesca)-España
Tfno. (+34) 974 417 830
www.serrat.com - comercial@serrat.es



The data presented in this catalog are provided for information purposes only and are not binding.