



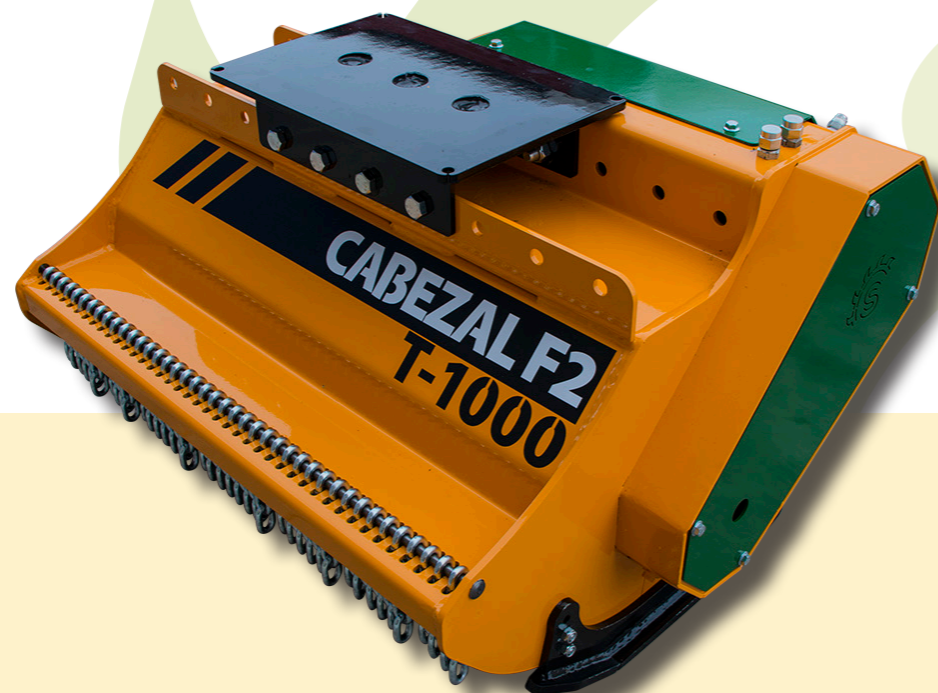
Mulcher for excavators and special carriers having a weight between 3,5 and 6 t.

Steel-plate chassis of 6 mm with the hooking screwed on the top of the mulcher, which reinforce the chassis, giving the possibility of several positions of use.

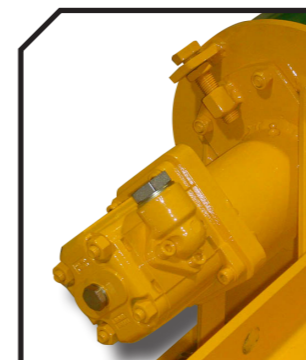
Suitable for the maintenance of greenspaces, riverbanks, bushes up to 60 mm of diameter.

### CHARACTERISTICS

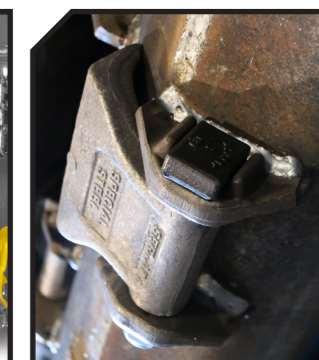
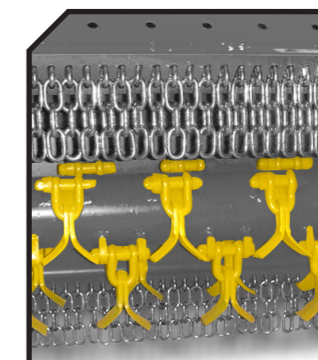
- ▶ Non-wear steel-plate chassis, thickness 6 mm.
- ▶ Rotor POLSER of Ø 420 mm.
- ▶ Mulcher for excavators having a weight between 3,5 and 6 T.
- ▶ 3 XPB side belt transmission.
- ▶ Double safety chains.
- ▶ High speed and high strength bearings.
- ▶ Hydraulic gear motor.
- ▶ Valve of recirculation incorporated into the motor.
- ▶ Front skid shoes.
- ▶ Model built under EC Normative.
- ▶ Safety indicators visible to personnel.



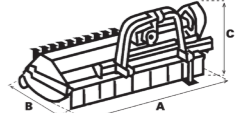


### Hydraulic gear motor

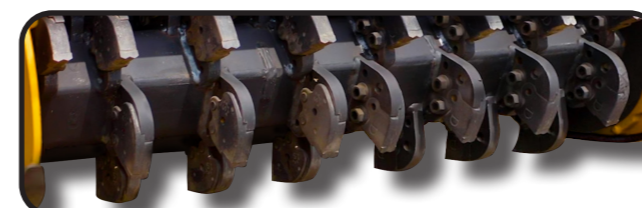


### Rotor with grass flails or forged hammers



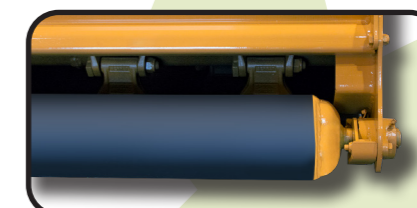
| MODEL  | mm   | HORSE POWER |           |  |  | KG  | Nº BELTS TYPE |  |      |      |      |      |      | RPM Rotor max. |
|--------|------|-------------|-----------|---|---|-----|---------------|---|------|------|------|------|------|----------------|
|        |      | min. req.   | max. aut. |   |   |     |               | A mm  | A in | B mm | B in | C mm | C in |                |
| T-600  | 600  | 50-80 l/min | 180 bar   | 24  | 9   | 262 | 3 XPB         | 735   | 26"  | 875  | 34"  | 645  | 25"  | 2500           |
| T-800  | 800  | 50-80 l/min | 180 bar   | 32  | 9   | 298 | 3 XPB         | 935   | 37"  | 875  | 34"  | 645  | 25"  | 2500           |
| T-1000 | 1000 | 50-80 l/min | 180 bar   | 40  | 12  | 336 | 3 XPB         | 1135  | 45"  | 875  | 34"  | 645  | 25"  | 2500           |
| T-1200 | 1200 | 50-80 l/min | 180 bar   | 48  | 12  | 373 | 3 XPB         | 1335  | 53"  | 875  | 34"  | 645  | 25"  | 2500           |

### OPTIONS



▶ Fixed tooth with tip in tungsten

### ▶ Hydraulic engine with pistons



▶ Rear height-adjustable roller



▶ Hooking



▶ Ripper

