



This new mulcher, in a single pass as usual speed, can cut and pour grass at the feet of fruit trees and vineyards. Without additional cost and triple benefit:
-25-30% less in herbicide. Grass chlorophyll function stops when tree base covers.
-20-25% water save. Avoiding evaporation in irrigation zone.
-20% less on cutting grass. When grass is cut and pour in tree bases, central line

will be desertified.
With this mulcher, Serrat wants to contribute at the promotion of environment protection. Which has an incalculable ecological value, for all.

CHARACTERISTICS

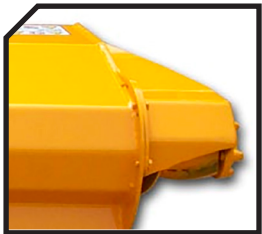
- ▶ Steel-plate chassis, thickness 8 mm.
- ▶ Rotor POLSER of Ø 450 mm.
- ▶ Gearbox SERRAT.
- ▶ 3 XPC side belt transmission.
- ▶ Forged hammers SERRAT special "grass".
- ▶ GIROSTOP system into the bolt of the hammer.
- ▶ Supports of bearing rotor in steel.
- ▶ High speed and high strength bearings.
- ▶ Front protection curtain.
- ▶ System antiwire in rotor.
- ▶ Double bearing on rear roller.
- ▶ Rear height-adjustable roller Ø 180 mm (210 mm from T-2300).
- ▶ PTO 540 rpm.
- ▶ Steel counter hammers.
- ▶ Model built under EC Normative.
- ▶ Safety indicators visible to personnel.





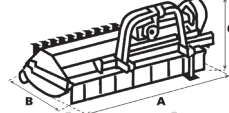



System antiwire in rotor



Nozzle exit



MODEL					N° BELTS TYPE				
	mm	KW-HP				A mm-in	B mm-in	C mm-in	
T-1200	1200	44 - 60 88 - 120	12	720	3 XPC	1460-57"	1560-61"	1000-39"	540
T-1400	1400	48 - 65 88 - 120	12	790	3 XPC	1660-65"	1560-61"	1000-39"	540
T-1600	1600	51 - 70 88 - 120	12	840	3 XPC	1860-74"	1560-61"	1000-39"	540
T-1800	1800	55 - 75 88 - 120	16	900	3 XPC	2060-81"	1560-61"	1000-39"	540
T-2000	2000	63 - 85 88 - 120	16	957	3 XPC	2260-89"	1560-61"	1000-39"	540
T-2100	2100	70 - 95 88 - 120	16	980	3 XPC	2360-93"	1560-61"	1000-39"	540
T-2300	2300	74 - 100 88 - 120	20	1000	3 XPC	2560-100"	1560-61"	1000-39"	540

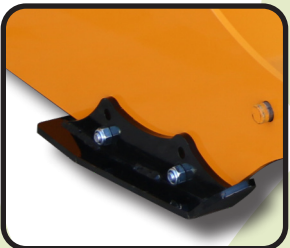
OPTIONS



Super hydraulic side shift



Front chains



Front adjustable skid shoes



Front wheels

- ▶ Freewheel
- ▶ Rear wheels
- ▶ Green X2
- ▶ Rounded side



Carretera nacional 240 km. 149,3
22310 Castejón del Puente (Huesca)-España
Tel. (+34) 974 417 830
www.serrat.com - comercial@serrat.com



The data presented in this catalog are provided for information purposes only and are not binding.